

The A-10 Loop

Description:

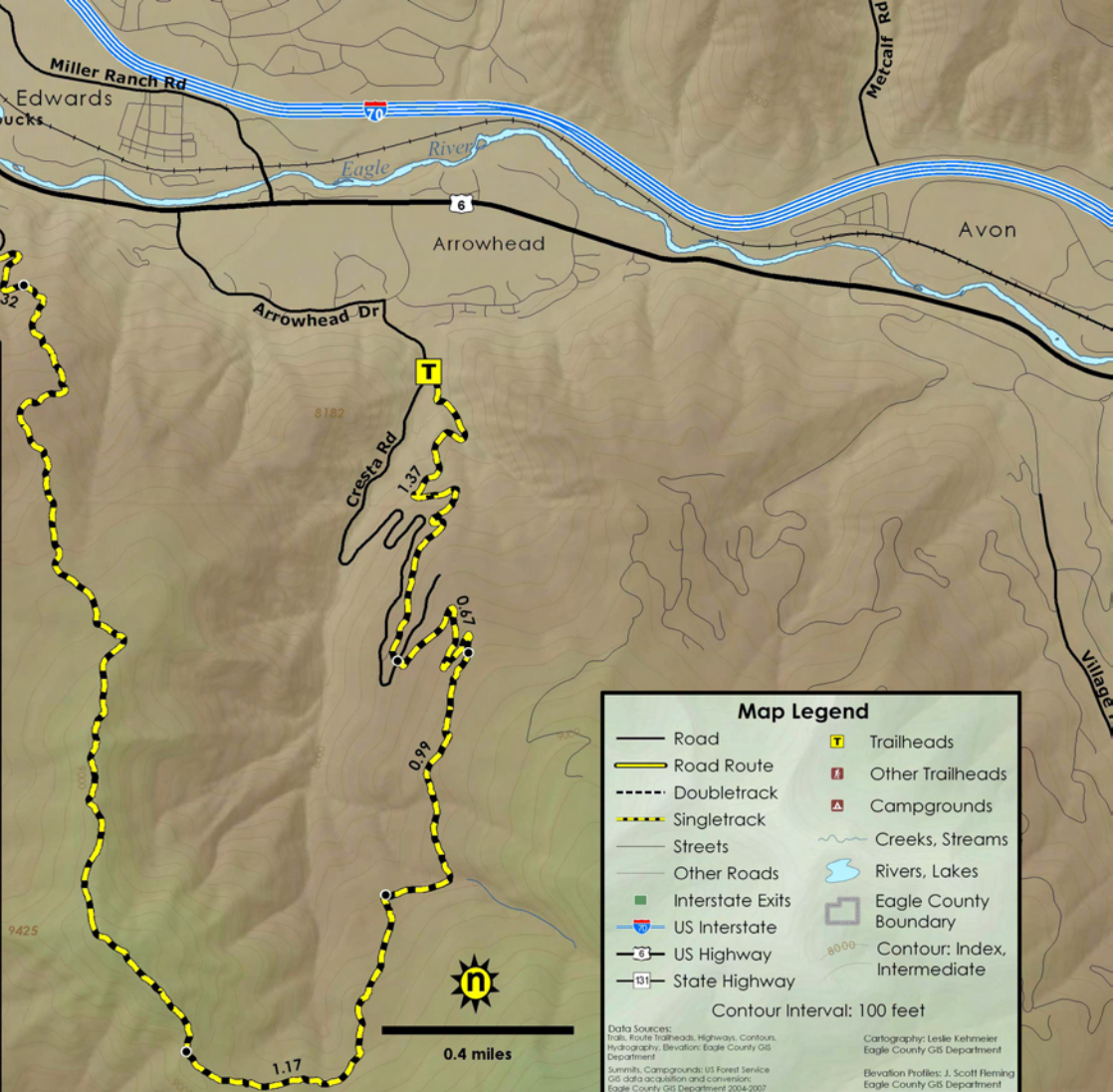
Start at Starbucks in Edwards. Ride east 0.80 miles on Highway 6 to Arrowhead Dr. Turn right and ride 0.82 miles to Cresta Rd. Follow road for 0.30 miles to the bottom of the ski area. Veer left onto a doubletrack going up the hill. The route changes to singletrack and works its way up to a service road. Ride for a short distance on the road and then turn right back onto singletrack. Ride for another 0.65 miles through the trees before coming to a bridge. Go under the bridge and turn left. The route turns back to doubletrack for a short time and then changes to singletrack again. After a few switchbacks, riders will come to a junction. Turn right here and head south. Ride for about a mile through the aspen and pine trees. This section is really spectacular during the fall colors. Beware of one creek crossing through here – it's made of logs and looks a little sketchy.

At the next intersection turn left and ride 1.15 miles

through aspens and meadow towards a saddle. Once on the saddle, enjoy the view of Gold Dust Peak and the surrounding mountains. Turn right and ride a short distance before the hike-a-bike begins. Hike about 0.5 miles uphill through the oakbrush. Get back on the bike and head north toward Homestead. The descent is a fun slalom through aspen trees, high meadows and oakbrush. The trail ends at the water tower above Homestead. Ride down Gold Dust Dr to Homestead Dr. Turn left and look for opening in fence. Turn right and ride the trail down the gully to Edwards Business Center. From here, follow Edwards Village Dr to Highway 6. Turn right again and ride back to Starbucks.

Directions:

Drive Interstate 70 west to Exit 163 Edwards. Drive south on the Interstate 70 access road to Highway 6. Turn left and drive a short distance to the Riverwalk Center. Starbucks is located on Highway 6 on the east side of the Riverwalk.



Map Legend

- Road
- Road Route
- Doubletrack
- Singletrack
- Streets
- Other Roads
- Interstate Exits
- US Interstate
- US Highway
- State Highway
- Trailheads
- Other Trailheads
- Campgrounds
- Creeks, Streams
- Rivers, Lakes
- Eagle County Boundary
- Contour: Index, Intermediate

Contour Interval: 100 feet

Data Sources:
 Trails, Route Trailheads, Highways, Contours,
 Hydrography, Elevation: Eagle County GIS
 Department
 Streets, Campgrounds: US Forest Service
 GIS data acquisition and conversion:
 Eagle County GIS Department 2004-2007

Cartography: Leslie Kehrmeier
 Eagle County GIS Department
 Elevation Profiles: J. Scott Fleming
 Eagle County GIS Department