



# Eagle County 1% Sales Tax Report

## Sales Tax Revenue - Budget to Actual



In 2019, sales tax revenue was \$18.2 million, 6% over the 2019 amended budget of \$17.2 million.

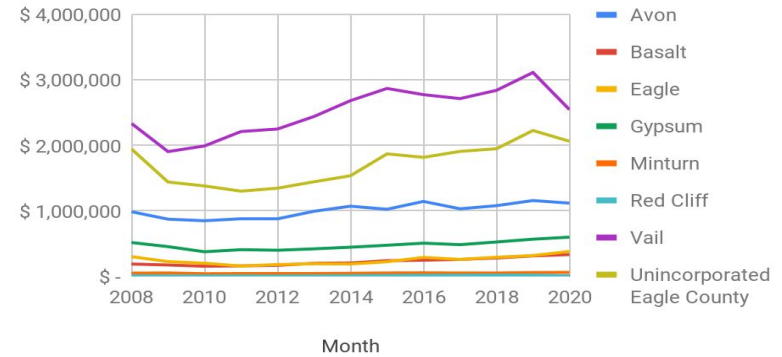
Through April 2020, sales tax revenue was \$6.4 million, 8% under budget of \$6.9 million.

In the month of April 2020 sales tax revenue of \$1.0 million was .5% (\$5k) higher than the same month in 2019.

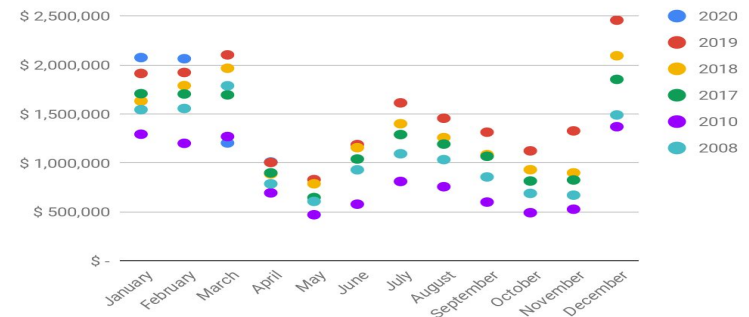
2008 was the pre-recession peak. 2010 was the lowest sales tax collected in the past 10 years.

Through April 2020, Basalt, Eagle, Gypsum, and Minturn saw sales tax collections higher than through the same months in 2019.

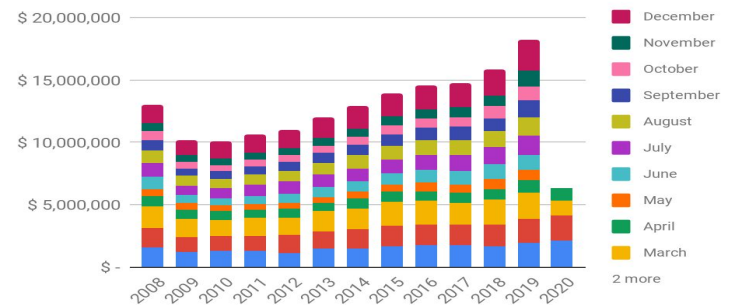
## 1% Sales Tax Cumulative Year to Date by Town



## 1% Sales Tax Collection by Month and Year



## 1% Sales Tax Cumulative Year to Date





# Eagle County 1% Sales Tax Report

## Eagle County 1% Sales Tax Collections

Month Earned	Month Received	Actual	Actual	Actual	Actual	Budget	Actual	Comparing Current Actual to Prior Year Actual		Comparing Current Actual to Budget	
		2016	2017	2018	2019	2020	2020	\$	%	\$	%
January	March	\$1,726,400	\$1,706,995	\$1,631,698	\$1,913,400	\$1,908,992	\$2,075,741	\$162,341	8.48%	\$166,749	8.73%
February	April	\$1,717,307	\$1,703,514	\$1,789,307	\$1,923,268	\$1,922,480	\$2,064,140	\$140,872	7.32%	\$141,660	7.37%
March	May	\$1,857,030	\$1,694,468	\$1,966,758	\$2,103,214	\$2,100,811	\$1,203,072	-\$900,143	-42.80%	-\$897,739	-42.73%
April	June	\$795,242	\$897,609	\$887,168	\$1,003,740	\$1,004,591	\$1,008,907	\$5,167	0.51%	\$4,316	0.43%
May	July	\$713,488	\$645,191	\$786,103	\$828,841	\$828,695			0.00%		0.00%
June	August	\$983,396	\$1,039,031	\$1,155,227	\$1,186,652	\$1,184,392			0.00%		0.00%
July	September	\$1,205,326	\$1,288,899	\$1,399,809	\$1,612,972	\$1,613,594			0.00%		0.00%
August	October	\$1,163,309	\$1,191,625	\$1,258,043	\$1,455,571	\$1,457,238			0.00%		0.00%
September	November	\$992,111	\$1,066,821	\$1,084,269	\$1,313,178	\$1,197,861			0.00%		0.00%
October	December	\$752,775	\$814,216	\$929,856	\$1,122,357	\$1,027,271			0.00%		0.00%
November	January	\$745,208	\$824,766	\$897,986	\$1,326,440	\$992,063			0.00%		0.00%
December	February	\$1,909,978	\$1,852,777	\$2,094,384	\$2,457,751	\$2,303,412			0.00%		0.00%
<b>Total</b>		\$14,561,570	\$14,725,912	\$15,880,608	\$18,247,386	\$17,541,400	\$6,351,860	-\$591,763		-\$585,014	
% Increase (Decrease)		4.25%	1.13%	7.84%	14.90%	-3.87%					

## Eagle County 1% Sales Tax Collections Year-to-Date Cumulative

Month Earned	Month Received	Actual	Actual	Actual	Actual	Budget	Actual	Comparing Current Actual to Prior Year Actual		Comparing Current Actual to Budget	
		2016	2017	2018	2019	2020	2020	\$	%	\$	%
January	March	\$1,726,400	\$1,706,995	\$1,631,698	\$1,913,400	\$1,908,992	\$2,075,741	\$162,341	8.48%	\$166,749	8.73%
February	April	\$3,443,707	\$3,410,509	\$3,421,005	\$3,836,668	\$3,831,472	\$4,139,881	\$303,213	7.90%	\$308,409	8.05%
March	May	\$5,300,738	\$5,104,977	\$5,387,763	\$5,939,883	\$5,932,283	\$5,342,953	-\$596,930	-10.05%	-\$589,330	-9.93%
April	June	\$6,095,980	\$6,002,586	\$6,274,931	\$6,943,623	\$6,936,874	\$6,351,860	-\$591,763	-8.52%	-\$585,014	-8.43%
May	July	\$6,809,468	\$6,647,777	\$7,061,034	\$7,772,464	\$7,765,569			0.00%		0.00%
June	August	\$7,792,864	\$7,686,808	\$8,216,261	\$8,959,116	\$8,949,961			0.00%		0.00%
July	September	\$8,998,189	\$8,975,708	\$9,616,070	\$10,572,088	\$10,563,555			0.00%		0.00%
August	October	\$10,161,498	\$10,167,332	\$10,874,113	\$12,027,659	\$12,020,793			0.00%		0.00%
September	November	\$11,153,609	\$11,234,153	\$11,958,382	\$13,340,836	\$13,218,654			0.00%		0.00%
October	December	\$11,906,384	\$12,048,369	\$12,888,238	\$14,463,194	\$14,245,925			0.00%		0.00%
November	January	\$12,651,592	\$12,873,135	\$13,786,224	\$15,789,634	\$15,237,988			0.00%		0.00%
December	February	\$14,561,570	\$14,725,912	\$15,880,608	\$18,247,386	\$17,541,400			0.00%		0.00%



# Eagle County Marijuana Sales & Excise Tax Report

## Sales Tax Revenue - Budget to Actual

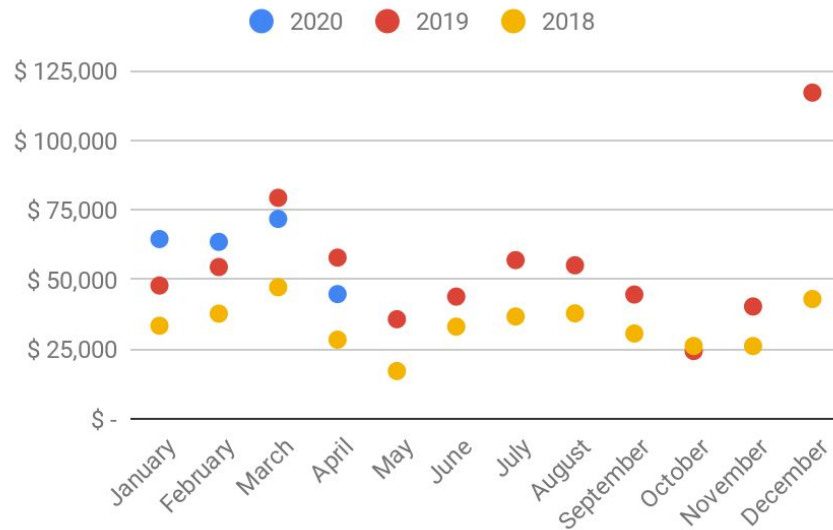


In 2019, MJ tax earned was \$658k, 14% over the amended budget of \$580k.

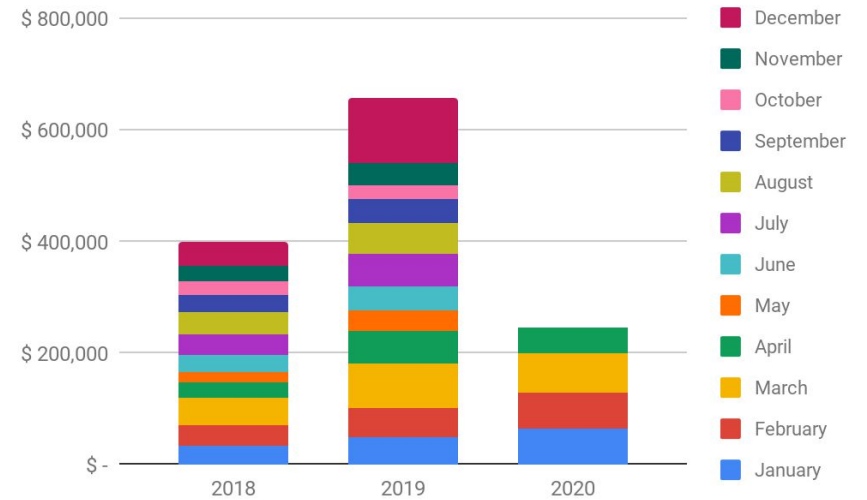
Through April 2020, MJ tax collected was \$245k, 11% over the budget of \$220k.

In April 2020 MJ tax revenue of \$45k was 11% (\$13k) lower than the same month in 2019.

## MJ Tax Collection by Month and Year



## MJ Tax Collection Cumulative Year to Date





## Eagle County Marijuana Sales & Excise Tax Report

### Eagle County Marijuana Sales and Excise Tax Collection

Month Earned	Month Received			Actual	Actual	Budget	Actual	Comparing Current Actual to Prior Year Actual		Comparing Current Actual to Budget	
				2018	2019	2020	2020	\$	%	\$	%
January	March			\$33,458	\$47,906	\$47,040	\$64,602	\$16,696	34.85%	\$17,562	37.33%
February	April			\$37,804	\$54,555	\$53,340	\$63,592	\$9,036	16.56%	\$10,252	19.22%
March	May			\$47,285	\$79,409	\$71,820	\$71,829	-\$7,579	-9.54%	\$9	0.01%
April	June			\$28,467	\$57,925	\$47,820	\$44,825	-\$13,100	-22.62%	-\$2,995	-6.26%
May	July			\$17,202	\$35,804	\$29,280			0.00%		0.00%
June	August			\$33,141	\$43,929	\$45,000			0.00%		0.00%
July	September			\$36,786	\$57,042	\$53,700			0.00%		0.00%
August	October			\$37,917	\$55,172	\$53,700			0.00%		0.00%
September	November			\$30,673	\$44,673	\$43,500			0.00%		0.00%
October	December			\$26,202	\$24,382	\$30,840			0.00%		0.00%
November	January			\$26,178	\$40,373	\$38,100			0.00%		0.00%
December	February			\$43,056	\$117,185	\$85,860			0.00%		0.00%
<b>Total</b>			\$0	\$398,170	\$658,354	\$600,000	\$244,848	\$5,053		\$24,828	
% Increase (Decrease)					65.35%	-8.86%					

### Eagle County Marijuana Sales and Excise Tax Collections Year-to-Date Cumulative

Month Earned	Month Received			Actual	Actual	Budget	Actual	Comparing Current Actual to Prior Year Actual		Comparing Current Actual to Budget	
				2018	2019	2020	2020	Month \$	Month %	Month \$	Month %
January	March			\$33,458	\$47,906	\$47,040	\$64,602	\$16,696	34.85%	\$17,562	37.33%
February	April			\$71,262	\$102,461	\$100,380	\$128,194	\$25,732	25.11%	\$27,814	27.71%
March	May			\$118,548	\$181,870	\$172,200	\$200,023	\$18,153	9.98%	\$27,823	16.16%
April	June			\$147,015	\$239,795	\$220,020	\$244,848	\$5,053	2.11%	\$24,828	11.28%
May	July			\$164,217	\$275,598	\$249,300			0.00%		0.00%
June	August			\$197,358	\$319,527	\$294,300			0.00%		0.00%
July	September			\$234,144	\$376,569	\$348,000			0.00%		0.00%
August	October			\$272,061	\$431,742	\$401,700			0.00%		0.00%
September	November			\$302,734	\$476,414	\$445,200			0.00%		0.00%
October	December			\$328,936	\$500,797	\$476,040			0.00%		0.00%
November	January			\$355,113	\$541,169	\$514,140			0.00%		0.00%
December	February			\$398,170	\$658,354	\$600,000			0.00%		0.00%



# Eagle County Tobacco Tax Report

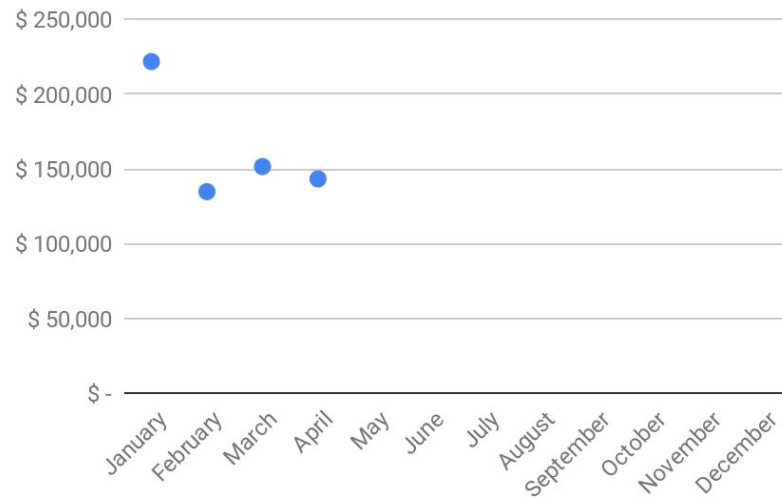
## Tobacco Tax Revenue - Budget to Actual



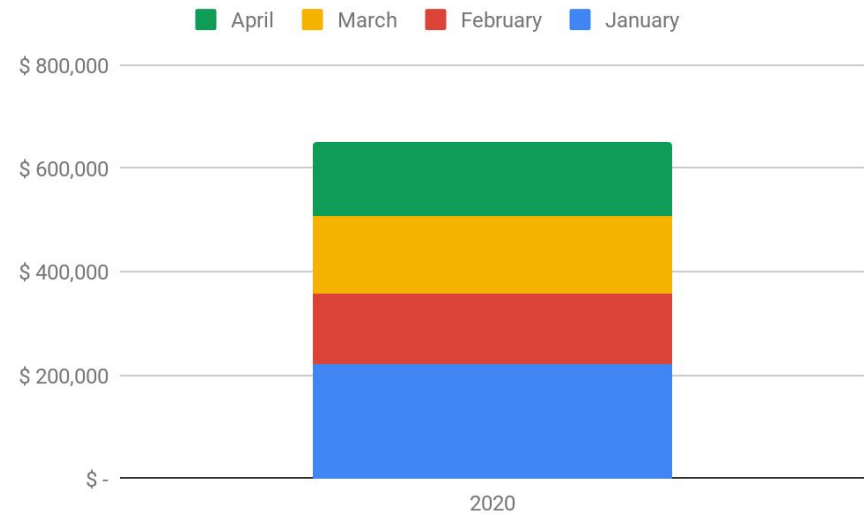
In 2019 Eagle County voters approved new taxes on the sale of cigarette and tobacco products.

Through April 2020, tobacco tax collected was \$652k, 54% over the budget of \$422k.

## Tobacco Tax Collection by Month and Year



## Tobacco Tax Collection Cumulative Year to Date





## Eagle County Tobacco Tax Report

### Eagle County Tobacco Tax Collection

Month Earned	Month Received					Budget	Actual	Comparing Current Actual to Prior Year Actual		Comparing Current Actual to Budget	
						2020	2020	\$	%	\$	%
January	March					\$115,167	\$221,847		n/a	\$106,680	92.63%
February	April					\$117,508	\$134,775		n/a	\$17,267	14.69%
March	May					\$129,196	\$151,582		n/a	\$22,386	17.33%
April	June					\$60,317	\$143,337		n/a	\$83,019	137.64%
May	July					\$45,265			n/a		0.00%
June	August					\$66,475			n/a		0.00%
July	September					\$83,810			n/a		0.00%
August	October					\$78,213			n/a		0.00%
September	November					\$65,772			n/a		0.00%
October	December					\$52,588			n/a		0.00%
November	January					\$54,313			n/a		0.00%
December	February					\$131,375			n/a		0.00%
<b>Total</b>			\$0	\$0	\$0	\$1,000,000	\$651,541	\$0		\$229,351	
% Increase (Decrease)											

### Eagle County Tobacco Tax Collections Year-to-Date Cumulative

Month Earned	Month Received					Budget	Actual	Comparing Current Actual to Prior Year Actual		Comparing Current Actual to Budget	
						2020	2020	Month \$	Month %	Month \$	Month %
January	March					\$115,167	\$221,847		n/a	\$106,680	92.63%
February	April					\$232,676	\$356,622		n/a	\$123,947	53.27%
March	May					\$361,872	\$508,204		n/a	\$146,332	40.44%
April	June					\$422,189	\$651,541		n/a	\$229,351	54.32%
May	July					\$467,455			n/a		0.00%
June	August					\$533,929			n/a		0.00%
July	September					\$617,739			n/a		0.00%
August	October					\$695,952			n/a		0.00%
September	November					\$761,724			n/a		0.00%
October	December					\$814,312			n/a		0.00%
November	January					\$868,625			n/a		0.00%
December	February					\$1,000,000			n/a		0.00%